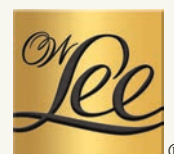




Product Gallery 2023





Thank you for choosing OW Lee.

For 75 years, OW Lee has been dedicated to the design and production of fine, handcrafted outdoor furniture. From our manufacturing facility in Comfort, Texas, artisans combine centuries-old techniques with state-of-the-art equipment to produce beautiful outdoor furniture.

Through four generations, OW Lee has maintained its commitment to quality and we will continue to produce the finest handcrafted outdoor furniture available.



TABLE OF CONTENTS

ABOUT OW LEE
2 COMPANY
3 QUALITY
5 INNOVATION

COLLECTIONS
6 ARIS
10 AVANA
12 CLASSICO
16 MARIN
20 MONTERRA

CASUAL FIRESIDE®
24 PROGRAM
26 OPTIONS
28 SANTORINI
28 CAPRI
29 ELBA
29 ACCESSORIES

TABLES, TOPS & BASES	
30 PROGRAM	35 DAKOTA
31 OPTIONS	PORCELAIN
32 FRESCO	36 VALENCIA
PORCELAIN	PORCELAIN
33 CITY SERIES	37 TABLE BASES
PORCELAIN	39 FULLY-WELDED
34 RECLAIMED	TABLES
PORCELAIN	

FABRICS & FINISHES		
40 THROW PILLOWS	43	TRIM
40 WORLD OF	43	SLING
COLOR	43	FINISH
42 DESTINATIONS		
43 PENDLETON		

PRODUCT INFORMATION
44 CARE & MAINTENANCE
45 RETAIL WARRANTY





MADE FOR GENERATIONS

Truly an American family tradition, OW Lee Company was established in Pasadena, California, by Oddist W. Lee in 1947 as a wrought-iron gate manufacturer for the luxurious estates of Southern California. Due to increased requests from local patio furniture store owners, Oddist began to design and sell high-end patio furniture directly. In 1954, he incorporated under the name OW Lee Company.

Oddist's son, Bob, joined his father after high school and continued in the business after Oddist retired. Throughout the 1970s, 80s, and early 90s, Bob Lee and his wife, Beverly, established OW Lee Company as a well-known and reputable manufacturer in the ever-growing outdoor furniture industry. In 2008 Bob and Beverly received the Lifetime Achievement Award from the International Casual Furnishings Association in recognition of their exemplary contributions to the casual furniture industry and to their communities.

The third and fourth generation of the Lee family maintains Oddist's commitment to quality 75 years later. Bob's daughter Terri and son-in-law Chris are continuing to build OW Lee into the premier name in casual furnishings. The OW Lee name stands for quality, and as a family-owned business, they have pledged to continue the tradition started in 1947.



2010 | 2012 | 2013 | 2014 | 2015 | 2016 | 2017 | 2020

Voted by Casual Furniture Industry Retailers
ICFA Manufacturer of the Year

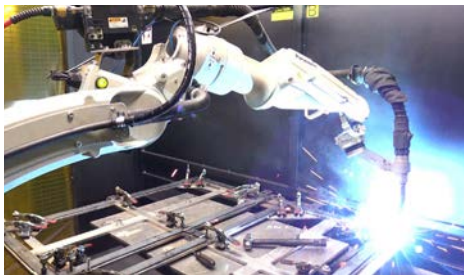
The International Casual Furnishings Association is a global leader in promoting business development and partnerships in the outdoor and casual furnishings industry. The Manufacturer of the Year award is one of the ICFA's top honors. ICFA members are invited to vote for this award using the following criteria: design and quality of products, merchandising, customer service, ethics, communications, and trade relations.

OW Lee stands for quality.

We do everything possible to make furniture that stands up to:

- ✓ Structural Failure
- ✓ Corrosion
- ✓ Rusting
- ✓ Oxidation
- ✓ Mold and Mildew
- ✓ Rain Water Retention
- ✓ Fading
- ✓ Disintegration from UV Rays
- ✓ Chemicals
- ✓ Stains

We invite you to learn about the steps we take to ensure your OW Lee furniture lasts for generations.



OW Lee utilizes two robotic welders for simpler and high volume items. These robotic welders allow OW Lee to achieve the highest level of accuracy in mere seconds.

Frames & Finish

Starting with raw materials, OW Lee adheres to the highest quality standards. Our raw aluminum and iron rods, tubing, and sheets used to make chair, table, and fire pit frames is often the most durable available on the market.



OW Lee employs an extensive process to apply a long-lasting powder coating finish to our frames. Using a chemical reaction, tiny paint-like particles known as "powder" adhere to the frame.

The chemical reaction in powder coating causes the particles to spread evenly into every corner and crevasse of the frame, preventing exposed metal which can cause corrosion. Our 5-step powder coating process includes two washing cycles, a zinc-rich primer coat, a baking process and then the final finish color is applied. This process puts a 4-6 mil thick finish on the metal, providing excellent protection against the outdoor elements.



Wherever there is an intersection of metal, we use a full-circumference weld to join the metal together.

While shopping, you may notice that OW Lee chairs are much heavier than other outdoor chairs. This is evidence of the thicker material we use. The thicker material is much more durable for outdoor use.



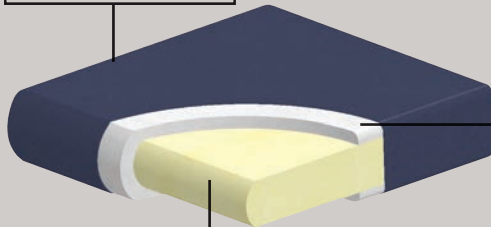
Steel and aluminum pieces are bent into exact shapes and then hand forged with a hammer and anvil, a process unchanged since blacksmiths in the middle ages.

Cushions

OW Lee stands behind the quality and construction of their cushions. We offer a five year warranty; one of the best warranties in the industry.



Cushion style used for dining, ottoman, and chaise cushions.



The polyester fiber dacron wrap provides soft yet durable comfort while resisting absorption of fluids or allowing for bacterial growth.

Our outdoor foam has anti-microbial properties to prevent mold and mildew and is made of an "open cell" material which allows water to pass through the foam.

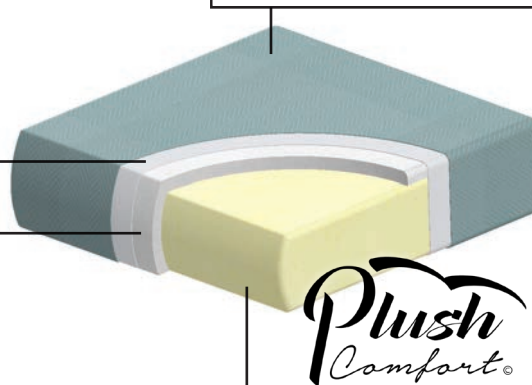
Tenara® thread is made from specially engineered fluoropolymer, not polyester like typical thread. Tenara thread is UV and water resistant, and will not break down from harsh chemicals such as bleach or chlorine.



OW Lee uses polyester Velcro to attach the cushion to the metal frame which has better UV resistance than traditional nylon Velcro.

Cushion style used for deep seating cushions. (lounge chair, sofa, sectional, etc.)

Spun water resistant fabric repels moisture and has a high breathability factor that allows for longer lasting comfort and immediate recovery.

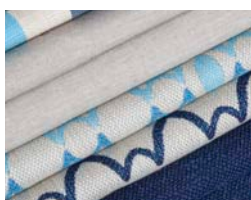


The polyester fiber dacron wrap provides soft yet durable comfort.

The indoor residential foam core provides the same type of comfort as fine indoor upholstered furniture and maintains original shape.



Only the highest quality outdoor fabrics are used in creating custom tailored cushions that follow the lines of the collection and fit each piece of furniture perfectly.



All Stock fabrics are 100% solution dyed acrylic. In "solution dyed" fabric every fiber in the yarn receives dye. Solution dyed fabric is more fade resistant than traditionally dyed fabric. The fabric is mold and mildew resistant and holds up to chemicals well (think about pool chlorine and bleach cleaning). It also has water wicking and quick drying properties.



Each cushion is expertly sewn by hand in Comfort, Texas.



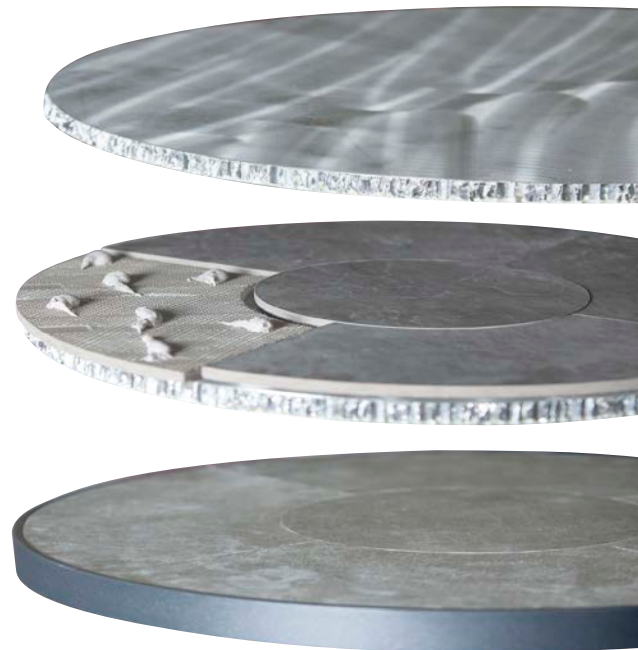
Sling is popular for outdoor spaces not only because it's comfortable. It is also water resistant, easy to maintain, and does not tear or crack easily.

- ✓ Available on select OW Lee collections in chaise lounges, sling and padded sling dining.
- ✓ Utilizes sewn pocket system for easy replacement.
- ✓ Sling dries quicker than foam related products.
- ✓ Sunbrella Sling's proprietary technology blends the strength of PVC with the softness of Sunbrella acrylic yarn for added comfort.
- ✓ Available in fifteen colors. Padded sling also available in all fabric options

Porcelain Tops

Our porcelain table tops contain three layers: the substrate, the adhesive, and the porcelain tile with grout, wrapped by a metal rim.

- 1** The substrate is the "foundation" of the table top. It is made of two lightweight aluminum sheets with a honeycomb structure sandwiched in between. The honeycomb shape is the strongest shape in nature and provides lightweight strength for the table top. This same material is also used on the sides of skyscrapers for the same reasons.
- 2** The next layer is an epoxy glue that adheres the tiles onto the substrate. This adhesive is superior to using tile mastic or other types of bonds, because of a chemical reaction that takes place, creating a stronger bond as it dries. The epoxy adhesive is also waterproof.
- 3** Lastly, the tile is precisely set and an epoxy grout is used where tiles meet. Porcelain tiles are used over ceramic tiles or natural stone because they are denser and less porous which means they do not absorb water. In freezing temperatures these other materials are likely to split or crack when the water absorbed into the material freezes and expands. Our porcelain tiles not only repel water, but all other liquids as well, so it will not stain from spills. These porcelain tiles are **commercial grade** and very durable. The kiln-fired finish is as durable as the tile itself and will last for years. The metal rim protects the tile from breaking due to side impact. For example, when the back of a chair hits against the table.





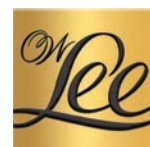
*Plush
Comfort.*



ARIS

ALUMINUM

The Aris collection applies mid-Century ergonomics to modern lines creating an attractive and superbly comfortable design. To achieve this comfort level, we have developed a two chambered ergonomically correct pillow back cushion. With the Aris collection, we intend to prove contemporary and comfort can be synonymous. Aris is a full-line collection that features dining chairs, counter and bar stools, and traditional deep seating and chaise lounge options. Additionally, Aris' deep seating features our Plush Comfort cushion and Sytex seating system.







2731-S
Dining Side Chair
#31-B Back Cushion Optional
18"W x 24.25"D x 34.25"H
Seat Height 18.75"



2733-A
Dining Arm Chair
#173-B Back Cushion Optional
24"W x 26.25"D x 38"H
Seat Height 19.75" Arm Height 25.5"



2733-SR
Swivel Rocker Dining Arm Chair
#173-B Back Cushion Optional
24"W x 26.25"D x 37.75"H
Seat Height 19.25" Arm Height 25.25"



2731-MCS
Backless Counter Stool
18"W x 18"D x 27.25"H



2731-CS
Armless Counter Stool
#31-B Back Cushion Optional
18"W x 24.25"D x 43.25"H
Seat Height 27.75"



2731-MBS
Backless Bar Stool
18"W x 18"D x 31.25"H



2731-BS
Armless Bar Stool
#31-B Back Cushion Optional
18"W x 24.25"D x 47.25"H
Seat Height 31.75"



27175-CC
Lounge Chair
30"W x 36"D x 42.75"H
Seat Height 18" Arm Height 25.5"



27175-SR
Swivel Rocker Lounge Chair
30"W x 36"D x 42.75"H
Seat Height 17.5" Arm Height 25.25"



27175-2S
Love Seat
56"W x 36"D x 42.75"H
Seat Height 18" Arm Height 25.5"



27175-3S
Sofa
82"W x 36"D x 42.75"H
Seat Height 18" Arm Height 25.5"



27170-O
Ottoman
30"W x 22"D x 18"H



27179-CH
Adjustable Chaise
30"W x 66.25"D x 39"H
Seat Height 16" Arm Height 19.75"



For dining, bar and occasional tables refer to the Modern
Bases & Tables in the Tables, Tops and Bases section.

AVANA

ALUMINUM

The Avana collection was designed with simplicity and comfort in mind. Its transitional profile features a modern swooping arm that is echoed in the gracefully balanced design of the back. Sunbrella Sling is incorporated on the dining and chaise seating, adding an extra level of ease and durability. Avana is a full-line collection that includes sling and padded sling dining, cushioned deep seating and sling chaise lounge options. Avana's cushioned deep seating features our Plush Comfort cushions and Sytex seating system.





65192-A
Sling Dining Arm Chair
24.25"W x 28.75"D x 37.5"H
Seat Height 18.25" Arm Height 26.75"



65192-SR
Sling Swivel Rocker Dining Arm Chair
24.25"W x 28"D x 37.5"H
Seat Height 18.25" Arm Height 26.75"



65192P-A New!
Padded Sling Dining Arm Chair
24.25"W x 28.75"D x 37.5"H
Seat Height 18.25" Arm Height 26.75"



65192P-SR New!
Padded Sling Swivel Rocker Dining Arm Chair
24.25"W x 28"D x 37.5"H
Seat Height 18.25" Arm Height 26.75"



65156-CC
Lounge Chair
30"W x 36.25"D x 40"H
Seat Height 18" Arm Height 25.25"



65156-SR
Swivel Rocker Lounge Chair
30"W x 37"D x 39.75"H
Seat Height 18" Arm Height 25"



65156-2S
Love Seat
56"W x 36.25"D x 40"H
Seat Height 18" Arm Height 25.25"



65156-3S
Sofa
82"W x 36.25"D x 40"H
Seat Height 18" Arm Height 25.25"



6590-O
Ottoman
30"W x 23.75"D x 18.25"H



65198-CHW
Sling Adjustable Chaise with Wheels
30"W x 78"D x 39.25"H
Seat Height 15.25" Arm Height 22"

For dining and occasional tables refer to the Modern Bases & Tables in the Tables, Tops and Bases section.



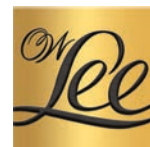
*Plush
Comfort.*



CLASSICO

WROUGHT IRON

Classico offers extremely comfortable seating in traditional wrought iron. Galvanized steel strapping make up the seat and the back and decorative rivets connect the beautifully interwoven straps together. Arms made of embossed flat bar complement the galvanized steel frame. Classico is a full-line collection that features dining, deep seating, chaise lounge options, counter stools, and table bases. Additionally, Classico's deep seating features our Plush Comfort cushions.







951-S

Dining Side Chair

#51-B Back Cushion Optional
20.25"W x 25.5"D x 36.5"H
Seat Height 18"



953-AW

Dining Arm Chair

#53-B Back Cushion Optional
22.75"W x 25.5"D x 36.5"H
Seat Height 18" Arm Height 26"



953-SRW

Swivel Rocker Dining Arm Chair

#53-B Back Cushion Optional
22.75"W x 25.5"D x 36.5"H
Seat Height 18" Arm Height 26"



942-SRW

Swivel Rocker

Club Dining Arm Chair
26"W x 29.75"D x 39.5"H
Seat Height 19.5" Arm Height 29.25"



953-SCSW

Swivel Counter Stool

#53-B Back Cushion Optional
22.75"W x 25.75"D x 46"H
Seat Height 27.5" Arm Height 35.5"



953-SBSW

Swivel Bar Stool

#53-B Back Cushion Optional
22.75"W x 25.75"D x 50"H
Seat Height 31.5" Arm Height 39.5"



956-CCW

Lounge Chair

28"W x 36.75"D x 38.5"H
Seat Height 18" Arm Height 26.5"



956-SBW

Spring Base Lounge Chair

28"W x 33.25"D x 41"H
Seat Height 17.5" Arm Height 26.5"



956-SRW

Swivel Rocker Lounge Chair

28"W x 34.25"D x 40.75"H
Seat Height 17.75" Arm Height 26.75"



937-SBW

High Back Spring Base

Lounge Chair
28"W x 33.25"D x 41"H
Seat Height 17.5" Arm Height 26.5"



937-SRW

High Back Swivel Rocker

Lounge Chair
28"W x 34.25"D x 40.75"H
Seat Height 17.75" Arm Height 26.75"



956-2SW

Love Seat

52.75"W x 36.75"D x 38.75"H
Seat Height 18" Arm Height 26.5"



956-3SW

Sofa

77.5"W x 36.75"D x 38.75"H
Seat Height 18" Arm Height 26.5"



950-OW

Ottoman

26.75"W x 26.25"D x 18.5"H



952-CHW

Adjustable Chaise

29.5"W x 68.25"D x 42.25"H
Seat Height 18.25" Arm Height 22.75"



9-ST01

Side Table Base

Fits 24"-30" Round, Square
16.25"W x 16.25"D x 19.75"H



9-OT05

Occasional Table Base

Fits 24"x44", 28"x50"
& 36"x58" Rectangle
44.5"W x 21.25"D x 17.75"H



9-DT03

Dining Table Base

Fits 42"-54" Round
& 34"-54" Square
26.25"W x 26.25"D x 28.25"H



9-DT07

Dining Table Base

Fits 42"x72", 42"x84"
& 44"x84" Rectangle
55"W x 27.75"D x 28.25"H

Table base height does not include the height of the top. The height of OW Lee table tops vary. Please see the Table Tops section for additional height information.



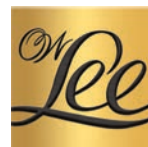
*Plush
Comfort.*



MARIN

ALUMINUM

The Marin collection is inspired from the Northern California coastal community of Marin County, located just north of San Francisco's Golden Gate Bridge. Taking cues from both natural elements as well as modern design, Marin exemplifies the relaxed yet sophisticated nature of the area. Marin is a full-line collection that includes sling, padded sling, and cushioned dining, deep seating, and a sling chaise lounge. Marin's cushioned deep seating features our Plush Comfort cushions and Sytex seating systems, which create a superior level of comfort.







37192-A
Sling Dining Arm Chair
 24.25"W x 28"D x 37.5"H
 Seat Height 18.25" Arm Height 26.5"



37192-SR
Sling Swivel Rocker Dining Arm Chair
 24.25"W x 28"D x 37.5"H
 Seat Height 18" Arm Height 26.25"



37192P-A New!
Padded Sling Dining Arm Chair
 24.25"W x 27.75"D x 35.5"H
 Seat Height 17.5" Arm Height 26.5"



37192P-SR New!
Padded Sling Swivel Dining Arm Chair
 24.25"W x 26.75"D x 35.5"H
 Seat Height 17.5" Arm Height 26.5"



3733-A
Dining Arm Chair
 #143-B Back Cushion Optional
 24"W x 27.25"D x 36.25"H
 Seat Height 18.75" Arm Height 25"



3733-SR
Swivel Rocker Dining Arm Chair
 #143-B Back Cushion Optional
 24"W x 27.25"D x 36.25"H
 Seat Height 18.75" Arm Height 25"



37165-CC
Lounge Chair
 30"W x 38.75"D x 32"H
 Seat Height 18" Arm Height 24"



37165-SR
Swivel Rocker Lounge Chair
 30"W x 36.75"D x 32"H
 Seat Height 18" Arm Height 24"



37165-2S
Love Seat
 56"W x 38.75"D x 32"H
 Seat Height 18" Arm Height 24"



37165-3S
Sofa
 81.25"W x 38.75"D x 32"H
 Seat Height 18" Arm Height 24"



37170-O
Ottoman
 30"W x 21"D x 18"H



37198-CH
Sling Adjustable Chaise
 30"W x 80.5"D x 38.75"H
 Seat Height 14.25" Arm Height 22"



37-ST01
Side Table Base
 Fits 24"-30" Round, Square
 17.75"W x 17.75"D x 19"H



37-DT03
Dining Table Base
 Fits 42"-54" Round & 34"-54" Square
 30"W x 30"D x 28.25"H



37-OT05
Occasional Table Base
 Fits 24"x44", 28"x50"
 & 36"x58" Rectangle
 43"W x 24"D x 17"H



37-DT07
Dining Table Base
 Fits 42"x72", 42"x84"
 & 44"x84" Rectangle
 53.5"W x 33.75"D x 28.25"H

Table base height does not include the height of the top. The height of OW Lee table tops vary. Please see the Table Tops section for additional height information.



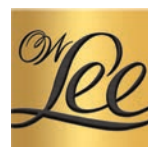
*Plush
Comfort.*



MONTERRA

WROUGHT IRON

Monterra is well-known as the most comfortable outdoor chair on the market. The back gently curves to meet the embossed flat bar arms to create a smooth rounded nest. Back and arm cushions curve and embrace you for a comfortable indoor feel. Each piece is detailed with hand hammered rivets for a casual but elegant look and feel. Monterra is a full-line collection and features dining, urban-scale and traditional deep seating, sectional pieces, and chaise lounge. Additionally, Monterra's deep seating features our Plush Comfort cushions.







404-A

Dining Arm Chair

#04-B Back Cushion Optional
29.75"W x 26.75"D x 39.25"H
Seat Height 19" Arm Height 25"



404-SR

Swivel Rocker Dining Arm Chair

#04-B Back Cushion Optional
29.75"W x 24.75"D x 40.25"H
Seat Height 18.5" Arm Height 24.75"



404-SCS

Swivel Counter Stool

#04-B Back Cushion Optional
30"W x 26.5"D x 48"H
Seat Height 27.75" Arm Height 33.5"



404-SBS

Swivel Bar Stool

#04-B Back Cushion Optional
30"W x 26"D x 52.5"H
Seat Height 31.5" Arm Height 37.75"



424-MSB

Urban-Scale Spring Base Lounge Chair

35.75"W x 30.75"D x 38.25"H
Seat Height 19" Arm Height 22.75"



424-MSR

Urban-Scale Swivel Rocker Lounge Chair

35.75"W x 30.75"D x 38.25"H
Seat Height 18.5" Arm Height 22.75"



423-2MS

Urban-Scale Crescent Love Seat

62.5"W x 31.75"D x 37"H
Seat Height 18" Arm Height 22.75"



4120-O

Urban-Scale Ottoman

33.5"W x 23"D x 18.5"H



421-CC

Lounge Chair

42.75"W x 38.5"D x 43.75"H
Seat Height 20" Arm Height 25.25"



421-SB

Spring Base Lounge Chair

42.5"W x 38"D x 44"H
Seat Height 19.5" Arm Height 25.5"



421-SR

Swivel Rocker Lounge Chair

42.5"W x 37.75"D x 44.5"H
Seat Height 19.5" Arm Height 25"



426-2S

Crescent Love Seat

70"W x 45"D x 43.5"H
Seat Height 19.5" Arm Height 25.5"



427-2S

Love Seat

67.5"W x 38.5"D x 43.75"H
Seat Height 20" Arm Height 25"



427-3S

Sofa

92"W x 42"D x 43.75"H
Seat Height 20" Arm Height 25"



425-L

Left Sectional

70.5"W x 44.5"D x 44"H
Seat Height 20" Arm Height 25"



425-R

Right Sectional

70.5"W x 44.5"D x 44"H
Seat Height 20" Arm Height 25"



425-C

Center Sectional

68"W x 44.5"D x 43.5"H
Seat Height 20"



419-O

Ottoman

35.75"W x 22.25"D x 18"H



487-O

Curved Ottoman

62.75"W x 28.5"D x 18.5"H



428-CH

Adjustable Chaise

42.5"W x 62"D x 45.5"H
Seat Height 19" Arm Height 25.5"

CASUAL FIRESIDE

FIRE PITS

The HOTTEST Outdoor Trend...

Entertaining outdoors has never been so fun! OW Lee fire pits are the leading brand when it comes to reliable, quality fire pits and tables. Enjoy your OW Lee fire pit with friends and family for years to come!



Hundreds of customizable options



Made in America



Portable as one unit



Natural gas conversion kit included



32k-65k BTU Rating
(depending on the unit)



ANSI and CSA certified

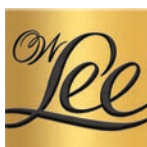


Easy tank access



OW Lee fire pits are certified according to ANSI and CSA (Canadian) safety standards by Labtest Certification Inc., located in Las Vegas, NV.

Labtest is an accredited independent third party testing certification laboratory which performs various tests to ensure the reliability and safety of every OW Lee fire unit. In addition, every fire pit and fire table is tested in the factory before shipping.





MATERIAL

OW Lee uses iron, steel or aluminum in the construction of their fire pits and fire table bases. Tops are made of porcelain tile and only the highest quality materials are used.



Steel



Aluminum

SIZE & HEIGHT

OW Lee has sizes from 42" round to 42"x72". Choose from three heights to compliment seating.



**OCCASIONAL
HEIGHT
18.5-19"**



**CHAT
HEIGHT
24-25.25"**



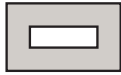
**COUNTER
HEIGHT
38"**

HEARTH TOPS

OW Lee has a wide variety of hearth top sizes, from 42" round to 42"x72"



**28x72 Top
10x50 Burner**



**30x50 Top
10x30 Burner**



**36x58 Top
10x30 Burner**



**42x72 Top
10x30 Burner**



**42 Round Top
20 Round Burner**



**54 Round Top
24 Round Burner**

BTU

BTU stands for "British Thermal Unit" and is a measurement of energy and heat. OW Lee fire pits have an optimal amount of BTUs to provide warmth and conserve fuel.

Burner Size	20-24" RD Chat & Occasional	10"x30" Chat & Occasional	10"x30" Counter	10"x50" Chat & Occasional
Liquid Propane BTUs	60,000	60,000	32,000	65,000
Natural Gas BTUs	60,000	62,500	44,000	65,000



OPTIONS

PORCELAIN TILE

For use on Santorini, Capri, and Elba fire pits.



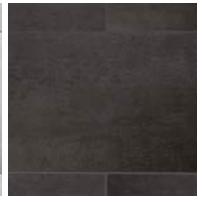
Cabaletta
Standard Fresco Tile



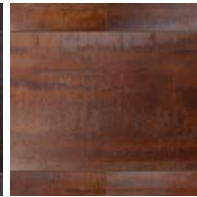
Cavatina
Standard Fresco Tile



Urban Pulse
Standard City Series Tile



Urban Shift
Standard City Series Tile



Brilliant Brown
Upgrade City Series Tile



Quarry Naturele
Upgrade City Series Tile



Myrtle Beach
Upgrade Reclaimed Tile



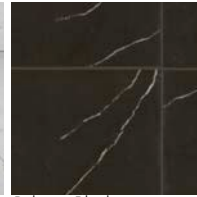
Atlantic City
Upgrade Reclaimed Tile



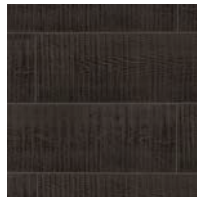
Venice Beach
Upgrade Reclaimed Tile



Palazzo White
Premium Fresco Tile



Palazzo Black
Premium Fresco Tile



Blackwood
Premium Dakota Tile



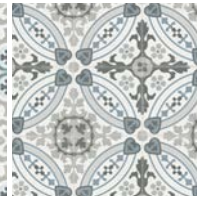
Buckskin
Premium Dakota Tile



Silver Oak
Premium Dakota Tile

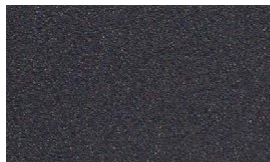


Trullo
Premium Valencia Tile

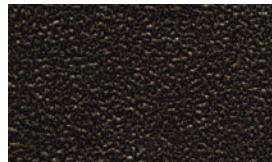


Cielo
Premium Valencia Tile

FINISHES



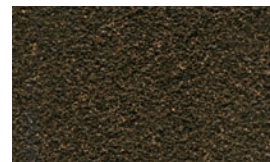
SP21 Graphite



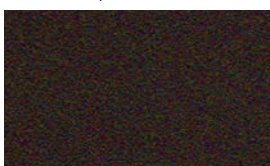
SP40 Copper Canyon



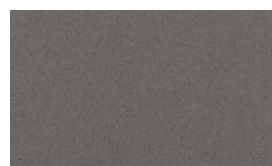
SP11 Rosewood



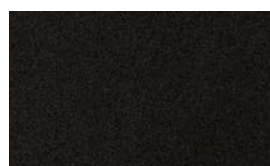
SP42 Espresso



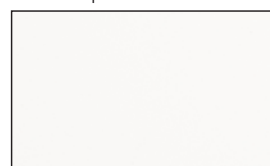
SP22 Sable



TG56 Shadow Grey



TG68 Carbon Black



VT25 Velvet White

FIRE MEDIA



5388-CCO Coffee
Crushed Fire Glass Kit



5388-CBL Black
Crushed Fire Glass Kit



5388-CCR Crystal
Crushed Fire Glass Kit



5388-MES Espresso
Mirrored Glass Kit



5388-MSM Smoke
Mirrored Glass Kit



5388-MCH Champagne
Mirrored Glass Kit



5388-MSV Silver
Mirrored Glass Kit



5388-MBL Black
Mirrored Glass Kit



5388-MPA Pacific
Mirrored Glass Kit



5388-GAM Amber
Glass Gem Kit



5388-GAR Aruba Glass
Gem Kit



5388-CAM Amber
Crushed Fire Glass Kit



5388-LG5 Lava Granules
5 lb. Kit



5388-WCL Ceramic Logs
with Lava Rock Granules Kit

Burner Pan Measurement	Glass Kits 6 Pound Bags, Lava Granules 5 Pound Bags			
	Mirrored Glass	Gem Glass	Crushed Glass	Lava Granules
20" Round	3 Kits	3 Kits	4 Kits	2 Kits
24" Round	5 Kits	5 Kits	6 Kits	3 Kits
10"x30" Rectangle	4 Kits	4 Kits	4 Kits	2 Kits
10"x50" Rectangle	6 Kits	7 Kits	6 Kits	3 Kits



SANTORINI

- Iron Base/Porcelain and Aluminum Top Construction
- Available in Occasional* and Chat Heights
- Customizable Options:
 - Finish
 - Tile
 - Media
 - Accessories

SKU	SIZE	HEIGHT	BURNER SIZE
5110-42RDO	42" ROUND	OCCASIONAL HEIGHT	20" ROUND BURNER
5110-42RDC	42" ROUND	CHAT HEIGHT	20" ROUND BURNER
5110-54RDO	54" ROUND	OCCASIONAL HEIGHT	24" ROUND BURNER
5110-54RDC	54" ROUND	CHAT HEIGHT	24" ROUND BURNER
5110-2872O	28" x 72" RECTANGLE	OCCASIONAL HEIGHT	10"x50" BURNER
5110-2872C	28" x 72" RECTANGLE	CHAT HEIGHT	10"x50" BURNER
5110-3050O	30" x 50" RECTANGLE	OCCASIONAL HEIGHT	10"x30" BURNER
5110-3050C	30" x 50" RECTANGLE	CHAT HEIGHT	10"x30" BURNER
5110-3658O	36" x 58" RECTANGLE	OCCASIONAL HEIGHT	10"x30" BURNER
5110-3658C	36" x 58" RECTANGLE	CHAT HEIGHT	10"x30" BURNER



CAPRI

- Iron Base/Porcelain and Aluminum Top Construction
- Available in Occasional* and Chat Heights
- Customizable Options:
 - Finish
 - Tile
 - Media
 - Accessories

SKU	SIZE	HEIGHT	BURNER SIZE
5112-42RDO	42" ROUND	OCCASIONAL HEIGHT	20" ROUND BURNER
5112-42RDC	42" ROUND	CHAT HEIGHT	20" ROUND BURNER
5112-54RDO	54" ROUND	OCCASIONAL HEIGHT	24" ROUND BURNER
5112-54RDC	54" ROUND	CHAT HEIGHT	24" ROUND BURNER
5112-2872O	28" x 72" RECTANGLE	OCCASIONAL HEIGHT	10"x50" BURNER
5112-2872C	28" x 72" RECTANGLE	CHAT HEIGHT	10"x50" BURNER
5112-3050O	30" x 50" RECTANGLE	OCCASIONAL HEIGHT	10"x30" BURNER
5112-3050C	30" x 50" RECTANGLE	CHAT HEIGHT	10"x30" BURNER
5112-3658O	36" x 58" RECTANGLE	OCCASIONAL HEIGHT	10"x30" BURNER
5112-3658C	36" x 58" RECTANGLE	CHAT HEIGHT	10"x30" BURNER





ELBA

- Aluminum Base/Porcelain and Aluminum Top Construction
- Available in Occasional* and Chat Heights
- Customizable Options:

Finish
Tile
Media
Accessories

SKU	SIZE	HEIGHT	BURNER SIZE
5122-42RDO	42" ROUND	OCCASIONAL HEIGHT	20" ROUND BURNER
5122-42RDC	42" ROUND	CHAT HEIGHT	20" ROUND BURNER
5122-54RDO	54" ROUND	OCCASIONAL HEIGHT	24" ROUND BURNER
5122-54RDC	54" ROUND	CHAT HEIGHT	24" ROUND BURNER
5122-2872O	28" x 72" RECTANGLE	OCCASIONAL HEIGHT	10"x50" BURNER
5122-2872C	28" x 72" RECTANGLE	CHAT HEIGHT	10"x50" BURNER
5122-3050O	30" x 50" RECTANGLE	OCCASIONAL HEIGHT	10"x30" BURNER
5122-3050C	30" x 50" RECTANGLE	CHAT HEIGHT	10"x30" BURNER
5122-3658O	36" x 58" RECTANGLE	OCCASIONAL HEIGHT	10"x30" BURNER
5122-3658C	36" x 58" RECTANGLE	CHAT HEIGHT	10"x30" BURNER
5122-4272K	42" x 72" RECTANGLE	COUNTER HEIGHT	10" x30" BURNER



FLAT COVERS

5484-1030	10" x 30" METAL FIRE PIT COVER
5484-1050	10" x 50" METAL FIRE PIT COVER
5484-20RD	20" RD METAL FIRE PIT COVER
5484-24RD	24" RD METAL FIRE PIT COVER



GLASS GUARDS

5482-1030	10" x 30" GLASS FIRE PIT GUARD
5482-1050	10" x 50" GLASS FIRE PIT GUARD
5482-20RD	20" RD GLASS FIRE PIT GUARD
5482-24RD	24" RD GLASS FIRE PIT GUARD



SPECIALTY FUEL

COM0598	20 Lb. Horizontal Propane Tank	*For Occasional Height Fire Pits
COM0599	11 Lb. Propane Tank	*For Occasional Height Fire Pits

Size of glass guards and flat covers reference the size of the burner for each fire pit.

TABLES, TOPS AND BASES

Our porcelain table tops are made with commercial grade porcelain tiles. Porcelain tiles are used over ceramic tiles or natural stone because they are denser and less porous which means they do not absorb water. In freezing temperatures these other materials are likely to split or crack when the water absorbed into the material freezes and expands. Our porcelain tiles not only repel water, but all other liquids as well, so it will not stain from spills. You can learn more about what goes into our porcelain table tops on page 5.



TOP + BASE

Mix and match any of our base styles with our Porcelain tops. Reference the chart to see which tops fit on which style bases.











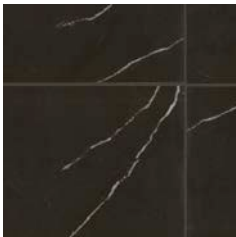
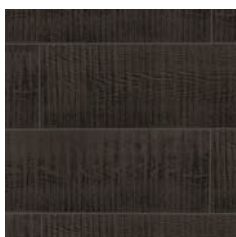




24" Rd.	Fits -01 Style Bases
24" Sq.	Fits -01 Style Bases
30" Rd.	Fits -01 Style Bases
42" Rd.	Fits -03 Style Bases
42" Sq.	Fits -03 Style Bases
54" Rd.	Fits -03 Style Bases
28" x 50"	Fits -05 Style Bases
36" x 58"	Fits -05 Style Bases
42" x 84"	Fits -07 Style Bases
42"x120"	Fits - 10 Style Bases Aluminum Rim Only






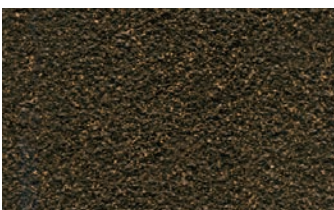
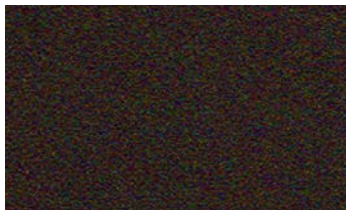

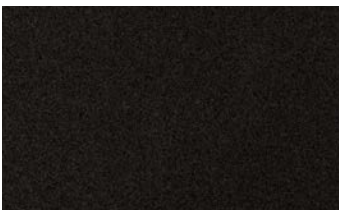

OPTIONS

PORCELAIN TILE

Five porcelain tile top series: Fresco, City, Reclaimed, Dakota, and Valencia

					
Cabaletta Standard City Series Tile	Cavatina Standard Fresco Tile	Urban Pulse Standard City Series Tile	Urban Shift Standard City Series Tile	Brilliant Brown Upgrade City Series Tile	Quarry Naturale Upgrade City Series Tile
					
Myrtle Beach Upgrade Reclaimed Tile	Atlantic City Upgrade Reclaimed Tile	Venice Beach Upgrade Reclaimed Tile	Palazzo White Premium Fresco Tile	Palazzo Black Premium Fresco Tile	
					
Blackwood Premium Dakota Tile	Buckskin Premium Dakota Tile	Silver Oak Premium Dakota Tile	Trullo Premium Valencia Tile	Cielo Premium Valencia Tile	

FINISHES

			
SP21 Graphite	SP40 Copper Canyon	SP11 Rosewood	SP42 Espresso
			
SP22 Sable	TG56 Shadow Grey	TG68 Carbon Black	VT25 Velvet White

FRESCO PORCELAIN TOPS



#P-24D	24" Rd.	Fits -01 Style Bases
#P-24SQD	24" Sq.	Fits -01 Style Bases
#P-2850RTD	28" x 50"	Fits -05 Style Bases
#P-30D	30" Rd.	Fits -01 Style Bases
#P-3658RTD	36" x 58"	Fits -05 Style Bases
#P-3658RTUD	36" x 58" with umbrella hole	Fits -05 Style Bases
#P-42D	42" Rd.	Fits -03 Style Bases
#P-42UD	42" Rd. with umbrella hole	Fits -03 Style Bases
#P-42SQD	42" Sq.	Fits -03 Style Bases
#P-42SQUD	42" Sq. with umbrella hole	Fits -03 Style Bases
#P-54D	54" Rd.	Fits -03 Style Bases
#P-54UD	54" Rd. with umbrella hole	Fits -03 Style Bases
#P-4284RTD	42" x 84"	Fits -07 Style Bases
#P-4284RTUD	42" x 84" with umbrella hole	Fits -07 Style Bases
#P-42120RTD	42"x120"	Fits - 10 Style Bases



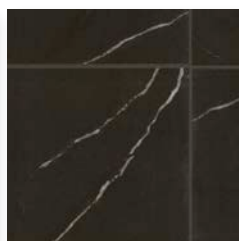
Cabaletta
Standard Grade



Cavatina
Standard Grade



Palazzo White
Premium Grade

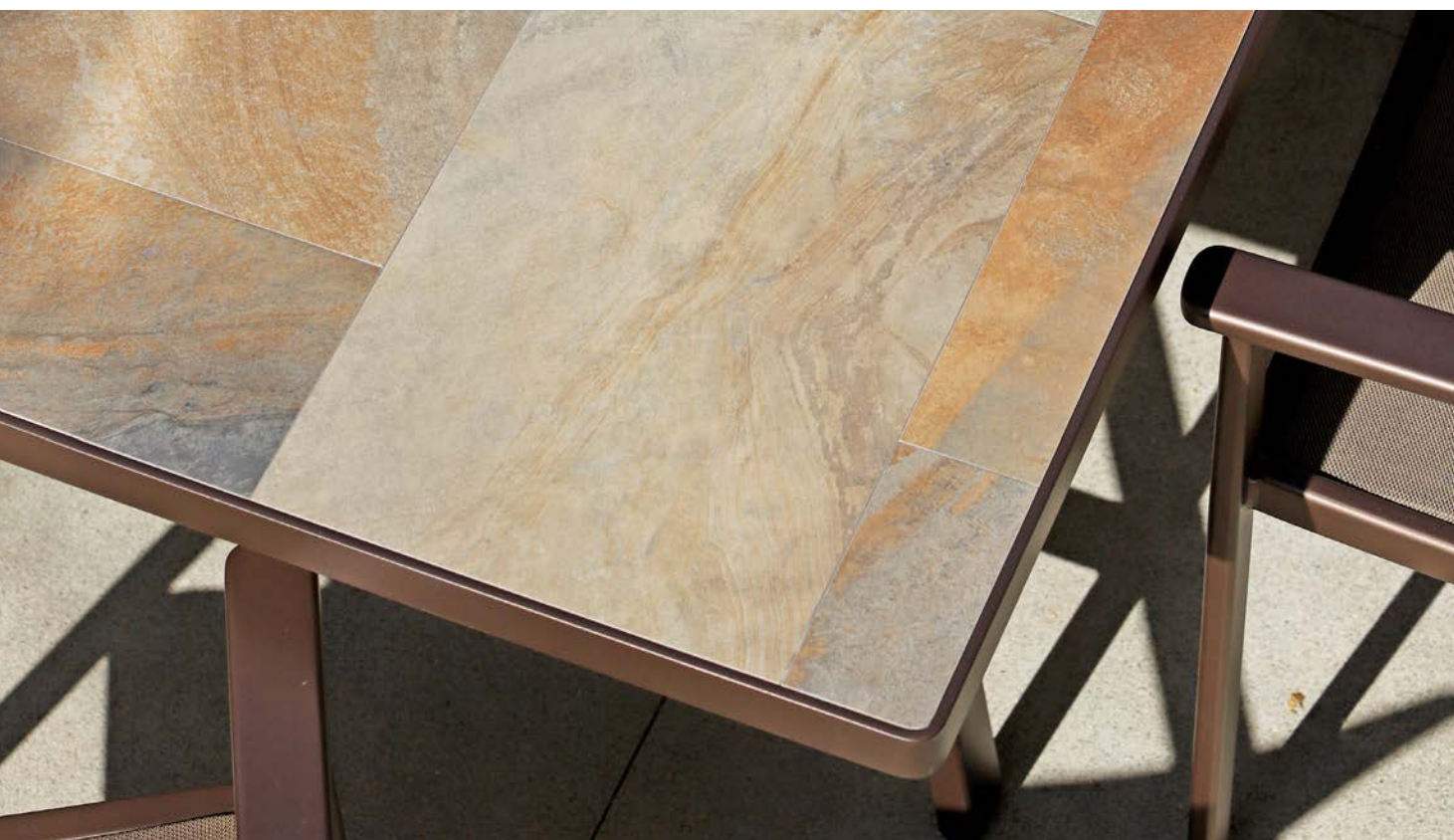


Palazzo Black
Premium Grade

CITY SERIES PORCELAIN TOPS



#E-24D	24" Rd.	Fits -01 Style Bases
#E-24SQD	24" Sq.	Fits -01 Style Bases
#E-2850RTD	28" x 50"	Fits -05 Style Bases
#E-30D	30" Rd.	Fits -01 Style Bases
#E-3658RTD	36" x 58"	Fits -05 Style Bases
#E-3658RTUD	36" x 58" with umbrella hole	Fits -05 Style Bases
#E-42D	42" Rd.	Fits -03 Style Bases
#E-42UD	42" Rd. with umbrella hole	Fits -03 Style Bases
#E-42SQD	42" Sq.	Fits -03 Style Bases
#E-42SQUD	42" Sq. with umbrella hole	Fits -03 Style Bases
#E-54D	54" Rd.	Fits -03 Style Bases
#E-54UD	54" Rd. with umbrella hole	Fits -03 Style Bases
#E-4284RTD	42" x 84"	Fits -07 Style Bases
#E-4284RTUD	42" x 84" with umbrella hole	Fits -07 Style Bases
#E-42120RTD	42"x120"	Fits - 10 Style Bases



Urban Pulse
Standard Grade



Urban Shift
Standard Grade



Brilliant Brown*
Upgrade Grade



Quarry Naturele*
Upgrade Grade

*Quarry Naturele and Brilliant Brown tiles are made to resemble a natural material. The tiles are varied so that no two tables will look exactly alike.



RECLAIMED PORCELAIN TOPS



#W-24D	24" Rd.	Fits -01 Style Bases
#W-24SQD	24" Sq.	Fits -01 Style Bases
#W-2850RTD	28"x50"	Fits -05 Style Bases
#W-30D	30" Rd.	Fits -01 Style Bases
#W-3658RTD	36" x 58"	Fits -05 Style Bases
#W-3658RTUD	36" x 58" with umbrella hole	Fits -05 Style Bases
#W-42D	42" Rd.	Fits -03 Style Bases
#W-42UD	42" Rd. with umbrella hole	Fits -03 Style Bases
#W-42SQD	42" Sq.	Fits -03 Style Bases
#W-42SQUD	42" Sq. with umbrella hole	Fits -03 Style Bases
#W-54D	54" Rd.	Fits -03 Style Bases
#W-54UD	54" Rd. with umbrella hole	Fits -03 Style Bases
#W-4284RTD	42" x 84"	Fits -07 Style Bases
#W-4284RTUD	42" x 84" with umbrella hole	Fits -07 Style Bases
#W-42120RTD	42"x120"	Fits - 10 Style Bases



Myrtle Beach
Upgrade Grade



Atlantic City
Upgrade Grade



Venice Beach
Upgrade Grade

DAKOTA PORCELAIN TOPS



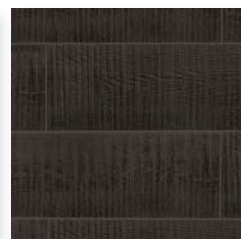
#D-24D	24" Rd.	Fits -01 Style Bases
#D-24SQD	24" Sq.	Fits -01 Style Bases
#D-2850RTD	28" x 50"	Fits -05 Style Bases
#D-30D	30" Rd.	Fits -01 Style Bases
#D-3658RTD	36" x 58"	Fits -05 Style Bases
#D-3658RTUD	36" x 58" with umbrella hole	Fits -05 Style Bases
#D-42D	42" Rd.	Fits -03 Style Bases
#D-42UD	42" Rd. with umbrella hole	Fits -03 Style Bases
#D-42SQD	42" Sq.	Fits -03 Style Bases
#D-42SQUD	42" Sq. with umbrella hole	Fits -03 Style Bases
#D-54D	54" Rd.	Fits -03 Style Bases
#D-54UD	54" Rd. with umbrella hole	Fits -03 Style Bases
#D-4284RTD	42" x 84"	Fits -07 Style Bases
#D-4284RTUD	42" x 84" with umbrella hole	Fits -07 Style Bases
#D-42120RTD	42"x120"	Fits - 10 Style Bases



Buckskin
Premium Grade

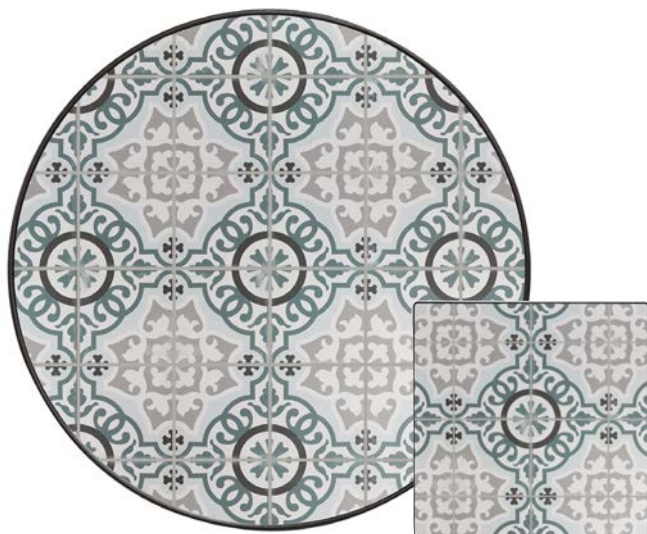


Silver Oak
Premium Grade



Blackwood
Premium Grade

VALENCIA PORCELAIN TOPS



#V-24D	24" Rd.	Fits -01 Style Bases
#V-24SQD	24" Sq.	Fits -01 Style Bases
#V-2850RTD	28" x 50"	Fits -05 Style Bases
#V-30D	30" Rd.	Fits -01 Style Bases
#V-3658RTD	36" x 58"	Fits -05 Style Bases
#V-3658RTUD	36" x 58" with umbrella hole	Fits -05 Style Bases
#V-42D	42" Rd.	Fits -03 Style Bases
#V-42UD	42" Rd. with umbrella hole	Fits -03 Style Bases
#V-42SQD	42" Sq.	Fits -03 Style Bases
#V-42SQUD	42" Sq. with umbrella hole	Fits -03 Style Bases
#V-54D	54" Rd.	Fits -03 Style Bases
#V-54UD	54" Rd. with umbrella hole	Fits -03 Style Bases
#V-4284RTD	42" x 84"	Fits -07 Style Bases
#V-4284RTUD	42" x 84" with umbrella hole	Fits -07 Style Bases
#V-42120RTD	42"x120"	Fits - 10 Style Bases



Trullo
Premium Grade



Cielo
Premium Grade



TABLE BASES

STANDARD IRON (Complements Monterra)



ST01-BASE

Side Table Base

Fits 24"-30" Round, Square
15"W x 15"D x 19"H



OT03-BASE

Occasional Table Base

Fits 42"-54" Round & 34"-54" Square
25"W x 25"D x 17"



OT05-BASE

Occasional Table Base

Fits 28"x50" & 36"x58" Rectangle
43"W x 20"D x 17"H



DT01-BASE

Dining Table Base

Fits 24"-30" Round, Square
15"W x 15"D x 28"H



DT03-BASE

Dining Table Base

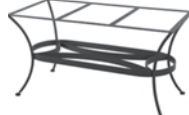
Fits 42"-54" Round & 34"-54" Square
25"W x 25"D x 28"H



DT05-BASE

Dining Table Base

Fits 28"x50" & 36"x58" Rectangle
43"W x 20"D x 28"H



DT07-BASE

Dining Table Base

Fits 42"x84" Rectangle
53.5"W x 26.5"D x 28"H



CT01-BASE

Counter Table Base

Fits 24"-30" Round, Square
15"W x 15"D x 37"H



CT03-BASE

Counter Table Base

Fits 42"-54" Round & 34"-54" Square
25"W x 25"D x 37"H



BT01-BASE

Bar Table Base

Fits 24"-30" Round, Square
15"W x 15"D x 41"H



BT03-BASE

Bar Table Base

Fits 42"-54" Round & 34"-54" Square
25"W x 25"D x 41"H

CLASSICO IRON (Complements Classico)



9-ST01

Side Table Base

Fits 24"-30" Round, Square
16.25"W x 16.25"D x 19.75"H



9-OT05

Occasional Table Base

Fits 28"x50" & 36"x58" Rectangle
44.5"W x 21.25"D x 17.75"H



9-DT03

Dining Table Base

Fits 42"-54" Round & 34"-54" Square
26.25"W x 26.25"D x 28.25"H



9-DT07

Dining Table Base

Fits 42"x84" & Rectangle
55"W x 27.75"D x 28.25"H

STANDARD ALUMINUM



AT-DT10 New!

Dining Table Base

Fits 42"x120" Rectangle Tops
67"W x 32"D x 28"H

TABLE BASES

MODERN ALUMINUM (Complements Aris and Avana)



MA-ST01

Side Table Base

Fits 24"-30" Round, Square
15"W x 15"D x 20"H



MA-OT05

Occasional Table Base

Fits 28"x50" & 36"x58" Rectangle
43"W x 20"D x 18"H



MA-DT03

Dining Table Base

Fits 42"-54" Round & 34"-54" Square
25"W x 25"D x 28"H



MA-DT07

Dining Table Base

Fits 42"x84" Rectangle
53.5"W x 26.5"D x 28"H



MA-DT10 New!

Dining Table Base

Fits 42"x120" Rectangle Tops
67"W x 32"D x 28"H



MA-CT03

Counter Table Base

Fits 42"-54" Round & 34"-54" Square
25"W x 25"D x 37"H



MA-CT05

Counter Table Base

Fits, 28"x50" & 36"x58" Rectangle
20"W x 43"D x 37.5"H



MA-BT03

Bar Table Base

Fits 42"-54" Round & 34"-54" Square
25"W x 25"D x 41"H



MA-BT05

Bar Table Base

Fits 28"x50" & 36"x58" Rectangle
20"W x 43"D x 41.5"H

MARIN (Complements Marin)



37-ST01

Side Table Base

Fits 24"-30" Round, Square
17.75"W x 17.75"D x 19"H



37-DT03

Dining Table Base

Fits 42"-54" Round & 34"-54" Square
30"W x 30"D x 28.25"H



37-OT05

Occasional Table Base

Fits 28"x50" & 36"x58" Rectangle
43"W x 24"D x 17"H



37-DT07

Dining Table Base

Fits 42"x84" Rectangle
53.5"W x 33.75"D x 28.25"H



TABLES

QUADRA (See page 31 for tile options)



QD-2323ST
23" Sq. Side Table
22.5"W x 22.5"D x 18"H



QD-3153OT
31"x53" Occasional Table
52.5"W x 30.5"D x 18"H



QD-2157DT
21"x57" Console/Dining Table
56.5"W x 20.5"D x 29"H
ADA COMPLIANT PRODUCT



QD-3375DT
33"x75" Dining Table
75"W x 33"D x 29"H
ADA COMPLIANT PRODUCT



QD-3375DTU
33"x75" Dining Table
With 1.625" Umbrella Hole
75"W x 33"D x 29"H
ADA COMPLIANT PRODUCT



QD-2157CT
21"x57" Counter Table
56.5"W x 20.5"D x 37.5"H



QD-3375CT
33"x75" Counter Table
75"W x 33"D x 37.5"H



QD-3375CTU
33"x75" Counter Table
With 1.625" Umbrella Hole
75"W x 33"D x 37.5"H



THE FINISHING TOUCHES

OW Lee offers 143 stock fabric options in three distinct collections, expertly curated and organized by coordinating colors and patterns to help you create your own unique look. All of our fabrics are solution-dyed acrylic, the industry gold standard for UV resistance and durability.

Cording options are available to embellish your look. Sunbrella Sling seating is also available for cushionless looks.



THROW PILLOWS

BASIC

#TP-1515	15" Square
#TP-1519	15" x 19"
#TP-1919	19" Square

BOXED

#BP-1519W	15" x 19"
-----------	-----------

OW Lee Throw Pillows are available with or without trim and accent back fabric. Choose main (front and back) fabric, accent (side) fabric, and welt or cording for a refined look.

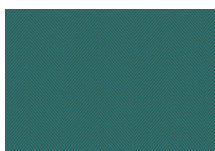
WORLD OF COLOR FABRICS



GS69B Sterling Gravel



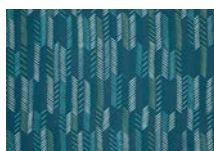
GS66B Cue Lagoon



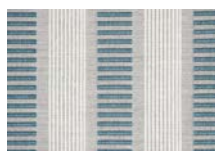
GL60A Trax Azure



GS33AA Flagship Silver



GS73B Surpass Lagoon



GS63C Sideline Mist



GS71B Crush Cloud



GS67B Huntington Mist



GS74AA Cast Lagoon



GS43A Tovo Lagoon



GS49B Sterling Alpaca



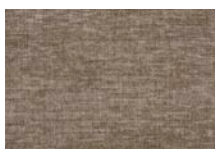
GS62A Sahara Hemp



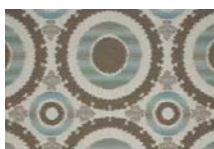
GS65B Kira Mist



GS13A Verona Mist



GS56B Platform Fawn



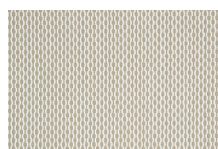
GS51C Abra River



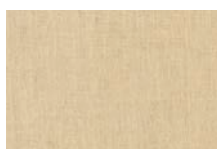
GS28AA Ethos Ivory



GS37B Castillo Putty



GS23B Matrix Sand



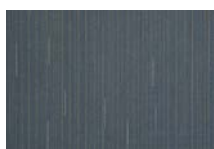
GR35AA Flagship Stone



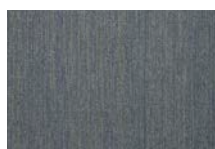
GS44B Knitwit Sand



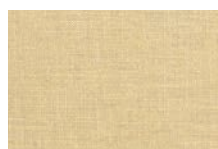
GS47A Asana Slate



GS29B Chase Denim



GS85A Sahara Denim



GL90A Belgian Linen Sand



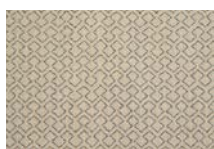
SU45D Painterly View



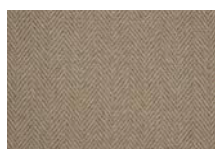
GS46A Sash Denim



GS78A Verona Denim



GS57B Kira Sand



GS72B Harris Stone



DESTINATIONS FABRICS



DS37D Vevi Sedona



DS21B Metz Mist



DS07E Kasos Sunbaked



DS12B Melaka Coastline



DS20B Metz Lake



DS35D Vevi Denim



DS17B Metz Denim



DS32C Tumbes Azure



DS29B Tabloid Indigo



DS13B Melaka Mercury



DS10E Madina Carob



DS19B Metz Indigo



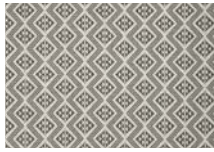
DS09E Madina Aegean



DS30B Tabloid Jungle



DS08E Kasos Surf



DS14B Melaka Moss



DS23B Metz Spruce



DS16B Melaka Woodland



DS31B Tabloid Spruce



DS04B Carlsbad Polo



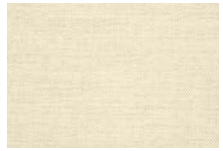
DS01B Arena Indigo



DS33C Tumbes Juniper



DS03B Carlsbad Indigo



DS26B Sailcloth Sailor



DS25C Sabah Indigo



DS34D Vevi Coffee



DS18B Metz Dove



DS11E Madina Coffee



DS15B Melaka Night



DS22B Metz Pebble



DS24C Sabah Classic



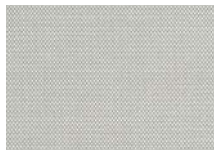
DS02B Carlsbad Classic



DS27B Sailcloth Salt



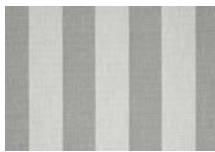
DS36D Vevi Flame



DS28B Sailcloth Seagull



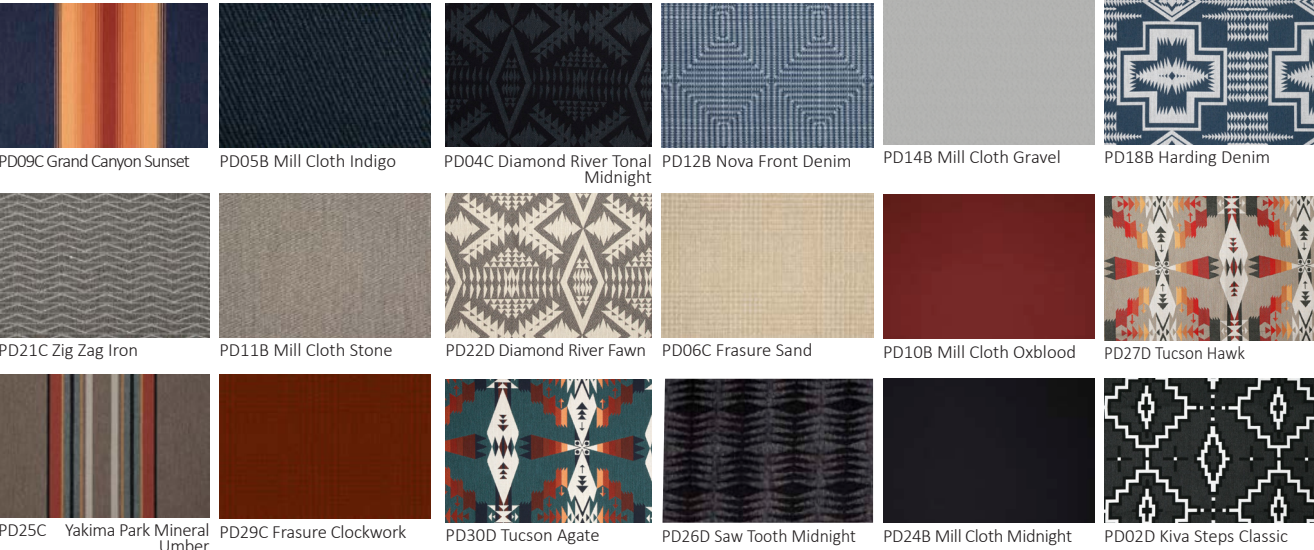
DS06E Kasos Clay



DS05B Carlsbad Smoke



PENDLETON FABRICS



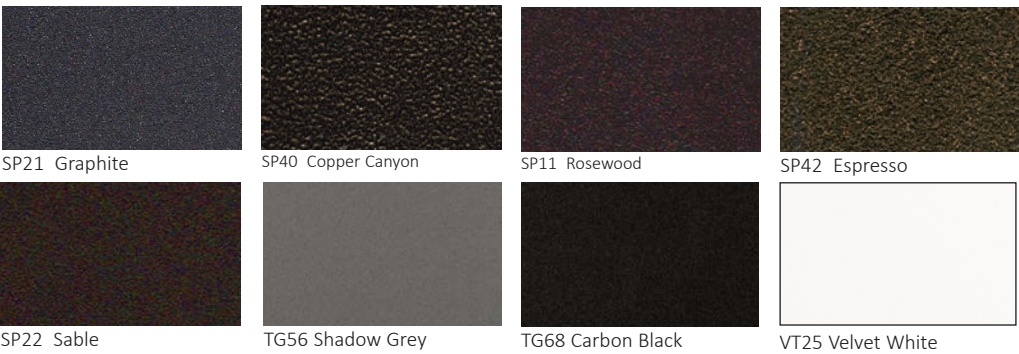
CORDING



SUNBRELLA SLING



FINISHES





CARE & MAINTENANCE

Metal Frame Maintenance

OW Lee metal furniture and fire pits are designed to require minimum maintenance. Metal frames/bases should be kept clean. Do not let dirt build up. Cleaning with mild soap and water, and seasonal touch-up of any scratches, chips or occasional rust seepage from crevices or hidden, unfinishable surfaces inherent in some ornate designs is required. Touch-up pens in matching frame colors are available through your retail dealer. Never leave furniture or fire pit standing in water. To keep your furniture or fire pit looking its best, you may wish to store or cover it when not in use for an extended period of time. More frequent care & maintenance may be required in coastal areas.

Cushion, Sling, and Padded Sling Care

OW Lee offers quality 100% solution dyed acrylics and only the finest outdoor foam and fiber fillings. Fabrics have been treated to resist stains and water before leaving the factory. Regular cleaning with mild soap and water using a sponge or soft scrub brush is all that is required.

Porcelain Table Tops & Hearth Tops

Regular cleaning, using a damp rag with plain water to remove minor dirt and dust is all that is required. All-purpose household cleaners can be used on porcelain tile. Soapless detergents such as Spic and Span® or 409® can also be used. Rinse with clean water and wipe dry to prevent water spots. Cleaning products

available from your local grocery or hardware store can be used to remove soap scum, hard water deposits, and mildew stains from the tile. Be sure to consult the cleaning product's instructions to ensure the product is recommended for your type of tile. After cleaning, rinse well and wipe dry. For detailed information on the care and maintenance of your OW Lee Porcelain tops and hearth tops, please visit www.owlee.com.

Authentic Hammered Copper Table Tops & Hearth Tops

Use only light hand soap and water to clean regularly. We recommend non-alkaline hand soap. Do not use an abrasive pad or scrub profusely when cleaning. Copper is a relatively soft metal and will scratch or mar if too much force is used when cleaning. We recommend softly cleaning with a cotton wash cloth or rag. Copper is a "living surface". Use coasters and placemats when enjoying the Hammered Copper table or hearth top. Acids in soft drinks, beer, or any number of beverages may interact with the patina coating. The same is true for a variety of foods. We recommend you keep the top dry. Continued exposure to water, i.e. repeated exposure to sprinklers or rain may cause the top to oxidize, causing the top to patina. If your top is scratched or comes into contact with an acid, a shiny spot of bare copper may appear. The spot will eventually age back to the original dark brown finish over time.

For more detailed care and maintenance information please visit www.owlee.com.

LIMITED RETAIL WARRANTY



Frame OW Lee offers a twenty (20) year limited structural warranty on frames under normal use. OW Lee will, at factory option, repair or replace any OW Lee frame that has failed structurally during the warranty period from the date of purchase. To retain the warranty, regular care and maintenance is required.

Finish OW Lee offers a five (5) year limited warranty for frames against blistering, peeling, or fading of the frame finish under normal use. OW Lee will, at factory option, refinish or replace your OW Lee frame if the above occurs during the warranty period from the date of purchase. Occasional rust seepage from crevices and hidden unfinished surfaces inherent in some ornate wrought iron designs is considered a care and maintenance function and is not considered a finish failure. To retain the warranty, regular care and maintenance is required. More frequent care & maintenance is required in coastal areas. Extra care and maintenance are required of any sort of metal furniture that is placed on the coast close to the salt water air. Remove salt buildup by rinsing furniture weekly and drying it with a soft cloth. Harsh cleaners should be avoided, however a gentle mild soap with water can be applied if needed.

Cushions OW Lee offers a five (5) year limited warranty on the craftsmanship and construction of the cushion, sling and padded sling seat, and Sytex material under normal use. This warranty includes any fading or discoloration of the fabric. Fabrics are constructed of various types of yarns and various numbers of yarns in the warp and fill. Such variations in construction result in variations in sag and sag recovery. SUCH VARIATIONS IN SAG AND SAG RECOVERY ARE SPECIFICALLY EXCLUDED FROM THIS WARRANTY. C.O.M. fabrics are not covered under this warranty. OW Lee will, at factory option, repair or replace your OW Lee cushions if determined defective as listed above within the warranty period from the date of purchase. To retain the warranty, regular care and maintenance is required. Never use a power washer or submerge in water to clean.

Porcelain Tops OW Lee offers a five (5) year limited warranty on workmanship and structural integrity of porcelain tops under normal use. Samples displayed or provided to customers are a representation of that series color and are not expressed or implied to be identical. Porcelain tiles are manufactured to mimic natural stone. Some unevenness in the table top surface is considered normal. OW Lee will, at factory option, repair or replace any top found to be defective during the warranty period from the date of purchase. To retain the warranty, regular care and maintenance is required.

Fire Pit Component Parts OW Lee offers a two (2) year limited warranty on fire pit burner components under normal use. OW Lee will, at factory option, repair or replace any outdoor fire pit burner found to be defective during this warranty period from the date of purchase. To retain the warranty, regular care and maintenance is required.

Other Component Parts OW Lee offers a two (2) year limited warranty on purchased component parts such as glides, fabric covers, bolts, wheels, 13' cantilever and swivel bases, etc. that fail due to a manufacturers defect under normal use. To retain the warranty, regular care and maintenance is required. This limited warranty does not apply to any damage caused by shipping, accidents, staining, natural weathering, misuse, alterations or repairs. No other person is authorized to assume liability on behalf of OW Lee, and in no events shall OW Lee be liable for any contributory or subsequent damager related to the merchandise purchased from OW Lee.

Items Not Covered Under Warranty (Residential)

- Any failure caused by unreasonable use or abuse.
- Rust seepage or bleeding from crevices or hidden, non-finished surfaces inherent in some ornate wrought iron designs.
- Rusting and/or oxidation of frames resulting from exposed metals that have been scratched, chipped or not maintained as outlined in the care and maintenance instructions.
- Natural fading or discoloration of fabrics beyond warrant period.
- C.O.M. fabrics (customer's own material).
- Normal fading of frame finish.
- Accidental damage (including fire, wind or other acts of God).
- Permanent stains caused by lotions, oils or other substances.
- Hard-water deposits or calcium build-up due to minerals found in regional water supplies.
- Table/hearth tops or bases installed and/or used with other manufacturer's table bases, table, or hearth top, or incorrect installation of the base to the table top and fire media.
- Furniture used for commercial or institutional use. (See Commercial Warranty at owlee.com.)
- Items that are repaired, refinished or otherwise modified by any person or entity other than OW Lee.

Freight Storage Fees

Any orders, commercial or retail stored at our factory due to customer delay is subject to a freight storage fee at our discretion.

Please Note: REGULAR CARE & MAINTENANCE IS EXPLICITLY

REQUIRED TO RETAIN YOUR WARRANTY. Please visit www.owlee.com/customer-care/ for care & maintenance instructions. OW Lee reserves the right to modify specifications as may be necessary. Please contact the factory to confirm specifications. 1/2" tolerances are considered within spec.

Return of Furniture PRIOR AUTHORIZATION from the factory or factory representative is required. You must be the original purchaser and be able to provide proof of purchase when you make a claim. To submit a warranty claim, contact the dealer where you purchased your furniture. If you are not sure how to contact the dealer, contact our warranty department at (800) 776-9533, via fax: (909) 947-6614 and/or via email at owleera@gmail.com. If the complaint is covered by warranty and the furniture returned within 24 months from the date of purchase, OW Lee will arrange for freight pick-up and pay the surface freight from the dealer location to the factory. The consumer is responsible for freight charges to and from the factory if beyond the timeframe stated above. Return furniture must be boxed for freight pick up. Furniture must have been used only for residential use as defined in the original purchase order. Except as expressly provided herein, OW Lee makes no warranties, whether express or implied including, but not limited to, warranties of merchantability and fitness for a particular purpose. OW Lee's limited warranty claims may only be processed directly through OW Lee by the dealer who made the sale of the merchandise. In the event the furniture style, frame finish, fabric or table top has been discontinued, OW Lee will replace the product with a similar item currently offered by OW Lee.

MANUFACTURED IN THE U.S.A.

M A D E F O R G E N E R A T I O N S



1206 Fifth Street, Comfort, Texas | www.owlee.com | (800)776-9533 | sales@owlee.com